

The NSW Government is taking action now to deliver transport improvements for the Northern Beaches, as well as planning for the future growth of the area.

\$633 million is being invested over the next five years to connect the new Northern Beaches Hospital to the community and to start delivery of bus rapid transit. This will be supported by traffic and road improvements, commuter car parks, modern bus stops and more frequent public transport services. This investment will establish a modern transport system for the Northern Beaches.

We are delivering projects that will connect key centres including Mona Vale, Dee Why, Brookvale and Frenchs Forest with employment, services and retail precincts like Manly, Northern Beaches Hospital, Macquarie Park, Chatswood and Sydney's CBD.

\$400 million is being invested in **major road improvements** to reduce congestion and improve travel times around the Northern Beaches Hospital in Frenchs Forest and the surrounding precinct. This includes **underpasses on Warringah Road** at Forest Way and Wakehurst Parkway. This package of work will be undertaken before the new world class health facility opens in 2018.

\$125 million is being invested to get on with the job of delivering kerbside **Bus Rapid Transit** (BRT) on the Northern Beaches. This will be supported by new bus lanes and **800 new commuter car parking spaces**, making public transport more attractive for customers. We are encouraging people to leave their cars and catch the bus, helping to reduce congestion in peak periods.

Five new public transport interchanges will allow for better connections and a more comfortable environment to transfer between all bus services. At these interchanges and other locations across the network, modern bus stops will be introduced. These facilities will link with footpaths and the cycle network as part of an integrated approach to connecting people with places.

But these immediate actions are only the beginning. We are continuing to plan for the future of the Northern Beaches and deliver further transport improvements as demand grows.

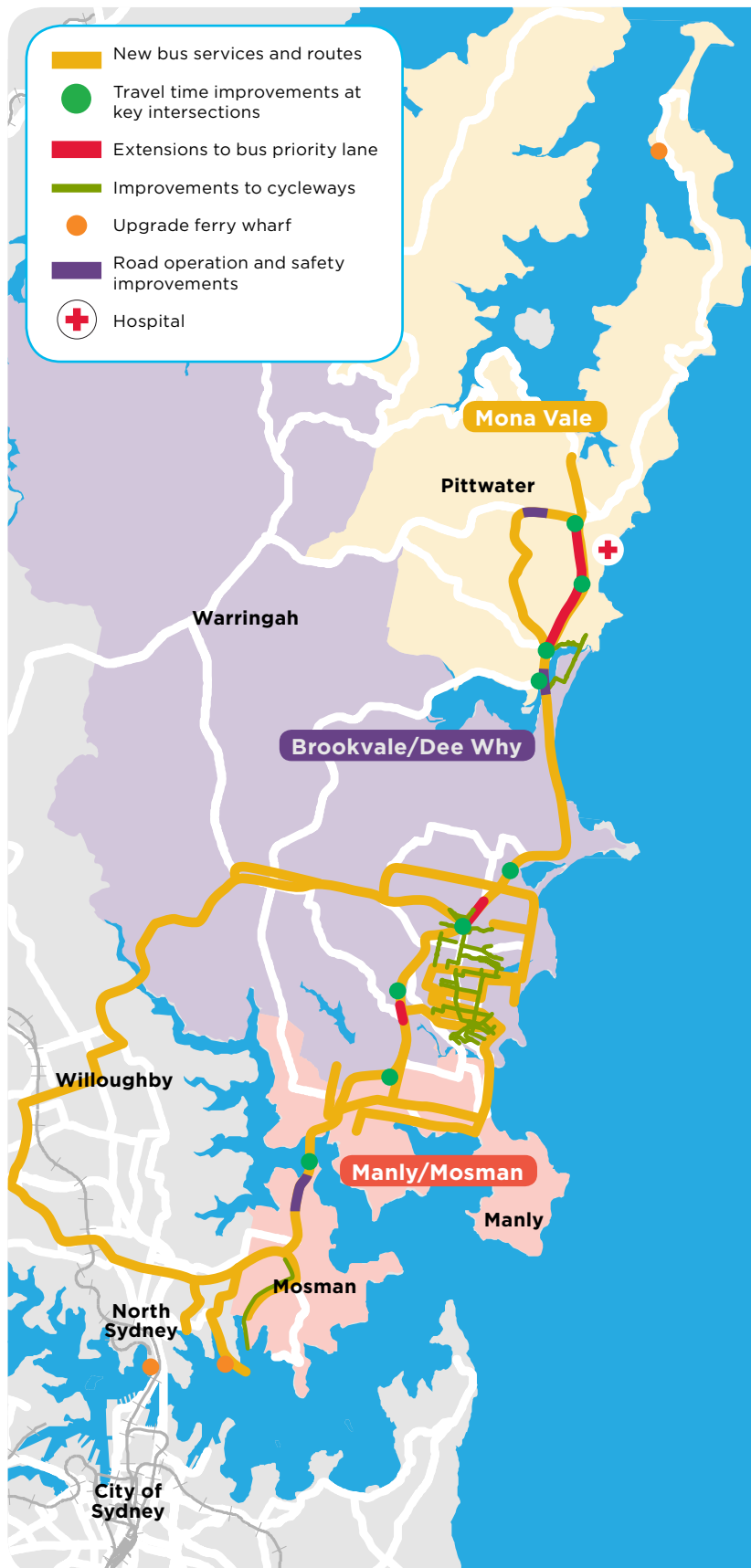
\$11 million is being invested to provide better bus services that will start earlier and finish later during the week and on weekends.

10 Highlights

1. Investing over \$633 million in transport infrastructure and services over the next five years
2. \$5 million from Restart NSW will be committed for strategic and feasibility studies establishing a Northern Beaches Motorway Tunnel
3. Underpasses on Warringah Road at Forest Way and Wakehurst Parkway as part of a package of major road improvements around the Northern Beaches Hospital
4. Kerbside Bus Rapid Transit (BRT) from Mona Vale to Sydney CBD
5. New commuter car parks taking up to 800 cars off the road during the peak
6. Five new key public transport interchanges making journeys easier
7. A four lane upgrade to Mona Vale Road and improvements to Wakehurst Parkway
8. Modern bus stops providing convenient, safe and attractive shelters across the Northern Beaches together with more frequent bus services from Mona Vale to Macquarie Park and Manly to Chatswood
9. Faster and more frequent ferries to the CBD
10. Seamless integrated ticketing with the Opal Card.

What we have achieved so far

The package of initiatives outlined in the Transport Action Plan builds on what we have already achieved for the Northern Beaches.



Achievements so far

Since coming to Government in 2011, we have already **delivered significant transport improvements** that benefit the Northern Beaches:

- 438 additional bus services through the Manly/Mosman area each week
- 83 additional bus services were introduced between Pittwater and the CBD each week
- 88 additional bus services were introduced between Brookvale/Dee Why and the CBD each week
- A new express bus route was introduced linking Warriewood Valley to the CBD
- Extended bus priority lanes from Mona Vale Road along Pittwater Road to Garden Street; from Pittwater Road from Warringah Road to Sturdee Parade and on Campbell Parade
- Intersection improvements at nine locations on Pittwater Road, Warringah Road and Spit Road
- Tidal flow arrangements improved on Spit Road between Ourimbah Road and Awaba Street
- Narrabeen Bridge structural and safety upgrades
- Upgrades to Mona Vale Road from Foley Street to Daydream Street
- Road works to improve safety, including targeting blackspots
- Reinstatement of 140 ferry services per week for Neutral Bay and Mosman
- Upgrades to the Milsons Point Wharf interchange and Neutral Bay Wharf
- \$1.5 million in funding for Pittwater Council to upgrade the Palm Beach ferry wharf
- Funding for pedestrian projects
- Completing the popular Narrabeen Lagoon multi-use cycle trail
- Extended the existing separated cycleway along Harbord Road, connecting the Northern Beaches Secondary College Freshwater and Manly Selective Campus with the off road cycleway
- Providing better separation of the on road cycleway route to the Taronga Zoo ferry wharf
- Median safety barrier on Spit Road, Mosman
- Opal electronic ticketing for all Sydney ferries.

Investing in the Northern Beaches

Linking the hospital to the community

The NSW Government is building the Northern Beaches Hospital, a world class health facility at Frenchs Forest scheduled to open in 2018.

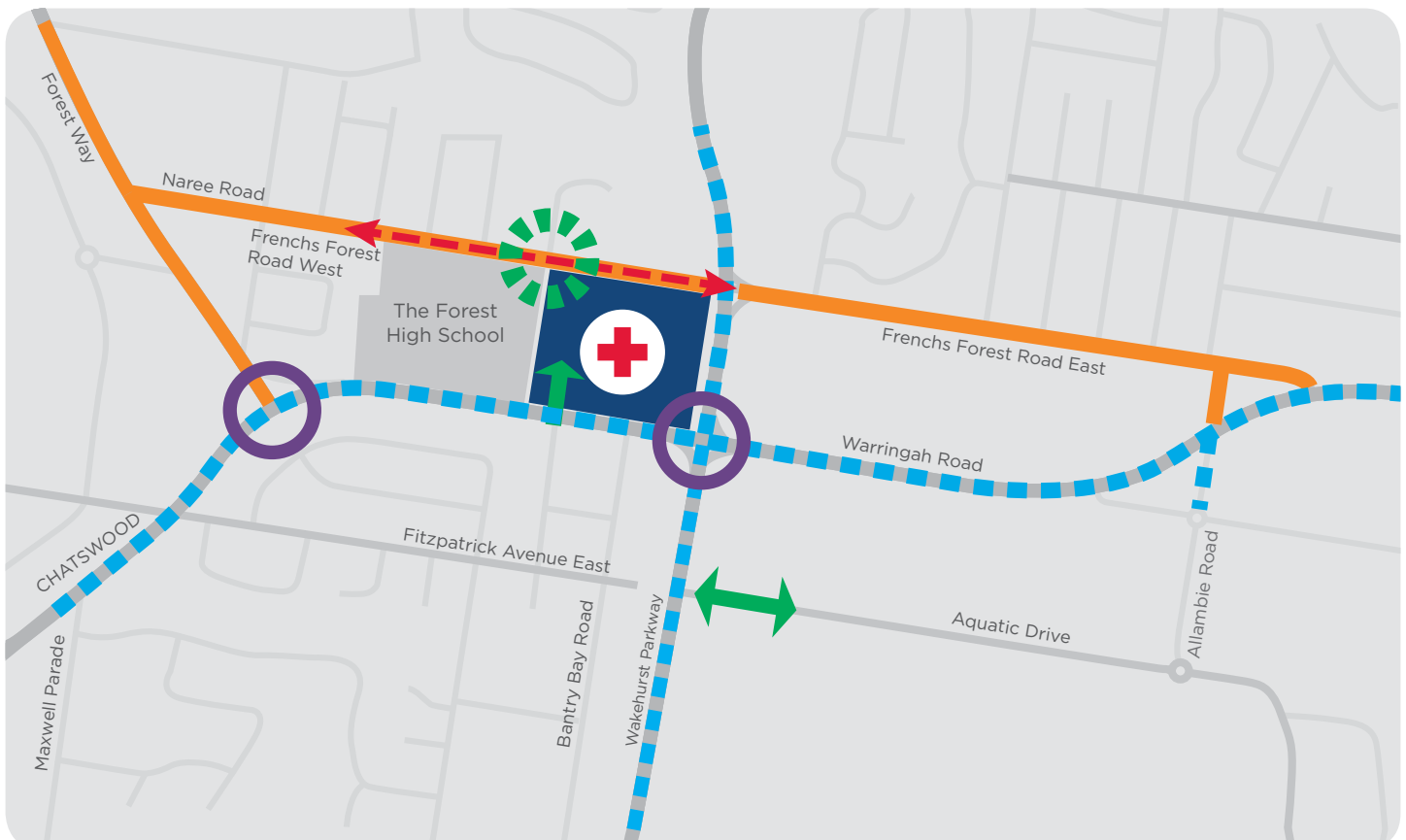
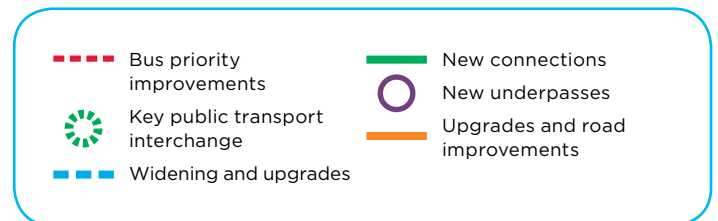
Without action congestion in the area will increase. We are responding with a \$400 million package of road projects including:

- **Underpasses** on Warringah Road at Forest Way and Wakehurst Parkway
- **Widening and upgrades** along Warringah Road
- **Widening** of Allambie Road south of Warringah Road
- **Investigating** the connection of Aquatic Drive with Wakehurst Parkway
- **Providing access** to the Hospital via the intersection of Warringah Road and Hilmer Street
- **Upgrades and improvements** to Frenchs Forest Road, Forest Way and Allambie Road.

These investments will integrate the hospital with the surrounding community and:

- Reduce delays in the area at peak times by up to seven minutes on average
- Increase average travel speeds in the area at peak times by up to 12km/h
- Improve traffic flow and bus reliability
- Reduce waiting time at 11 intersections in the area.

The first stage of road upgrades will be in place to provide access to the Hospital when it opens in 2018 with further improvements to improve access and reduce congestion for the surrounding area to follow, including improvements to local bus services.



Investing in the Northern Beaches

Bus Rapid Transit (BRT)

We are investing \$125 million to begin delivery of BRT for the Northern Beaches from Mona Vale to the Sydney CBD.

BRT will deliver faster, more reliable, bus journeys and reduce door to door travel time for customers. The investment will include indented bus bays, more frequent services and longer service operating hours. Roads, bridges and intersections will be improved from Mona Vale through to the Sydney CBD.

Following completion of the road upgrades, the missing links of the existing AM and PM peak period bus lane network will be completed. This will see transit lanes converted to bus lanes. We will work with local governments to replace parking and loading zones where they are impacted by these changes.

Rapid bus services will run along the kerbside BRT on a 'Turn Up and Go' frequency, with an average five minute wait for the bus - all day, every weekday.

Our investment of \$30 million to provide five new key public transport interchanges at Mona Vale, Dee Why, Brookvale, Northern Beaches Hospital and Mosman will provide better connections between all bus services making it easier for our customers. Modern bus stops will be introduced at Mona Vale, Warriewood, Narrabeen,

Collaroy, Dee Why, Brookvale, Manly Vale, Northern Beaches Hospital, Seaforth, Spit Junction, Neutral Bay and the Sydney CBD. These new bus stops will provide customers with convenient, easy-to-use facilities offering good levels of personal safety and security, information, weather protection and accessibility to all bus services.

We are also investing \$67 million in new commuter car parking at North Narrabeen, Narrabeen, Mona Vale, Warriewood and Brookvale. These commuter car parks will have the flexibility to provide parking for up to 800 more cars to connect with the BRT service. These commuter car parks will be within a five to ten minute drive of major residential catchments. The number of car parks can be increased as demand grows.

Over the next five years, we will also invest over \$11 million to provide better bus services that will start earlier and finish later during the week and on weekends - responding to where people need and want to go.

Over **900 buses** getting to the CBD quicker each day



Improving the Northern Beaches' roads

We are taking action now to deliver road upgrade works to reduce congestion and improve traffic flow, safety and travel times, throughout the Northern Beaches.

\$5 million from Restart NSW will be committed for strategic and feasibility studies establishing a Northern Beaches tunnel as part of the Sydney Roads Renewal package. These studies will finalise the route, capacity and passenger numbers for a future Northern Beaches tunnel linking the Northern Beaches to the Warringah Freeway and south across the harbour.

Improvements will also occur along Pittwater Road, Spit Road and Military Road with adjustments to traffic signals, provision of off road bus bays, road alignment and implementation of right turn bays.

This includes extending the existing tidal flow system at Mosman further north to Parriwi Road as well as

providing additional traffic capacity through Cremorne by reconfiguring traffic lanes for better operation.

Variable message signs will be installed on Wakehurst Parkway in Frenchs Forest and Sydney Road in Balgowlah to provide drivers with real time information.

In parallel with planning for the Northern Beaches Hospital road upgrade work, options to reduce the impact of flooding on the Wakehurst Parkway are being investigated.

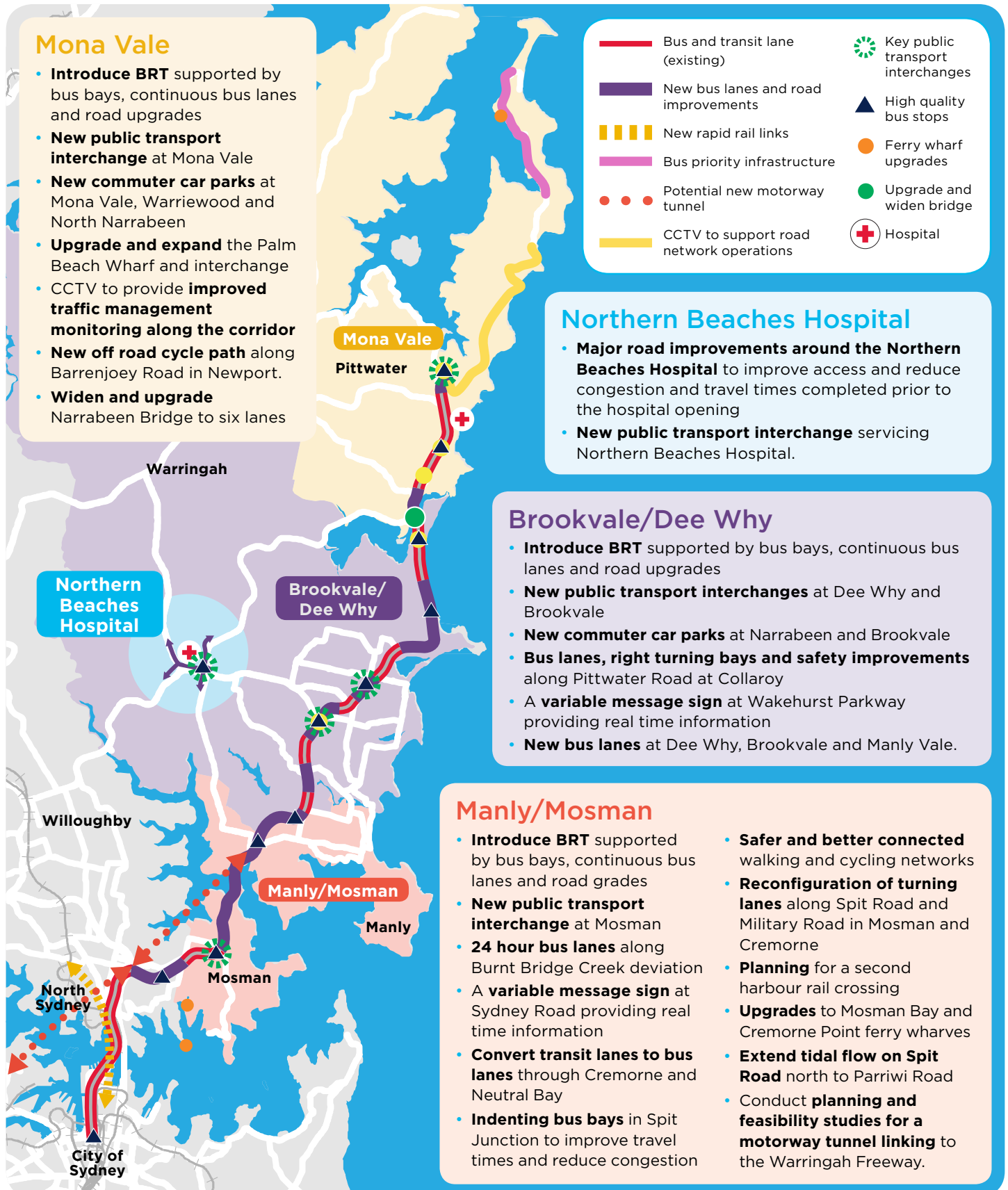
In mid-2014 we will also commence the first stage of the Mona Vale Road upgrade between Foley Street and Daydream Street.

\$5 million from Restart NSW will be committed for strategic and feasibility studies establishing a Northern Beaches Motorway Tunnel



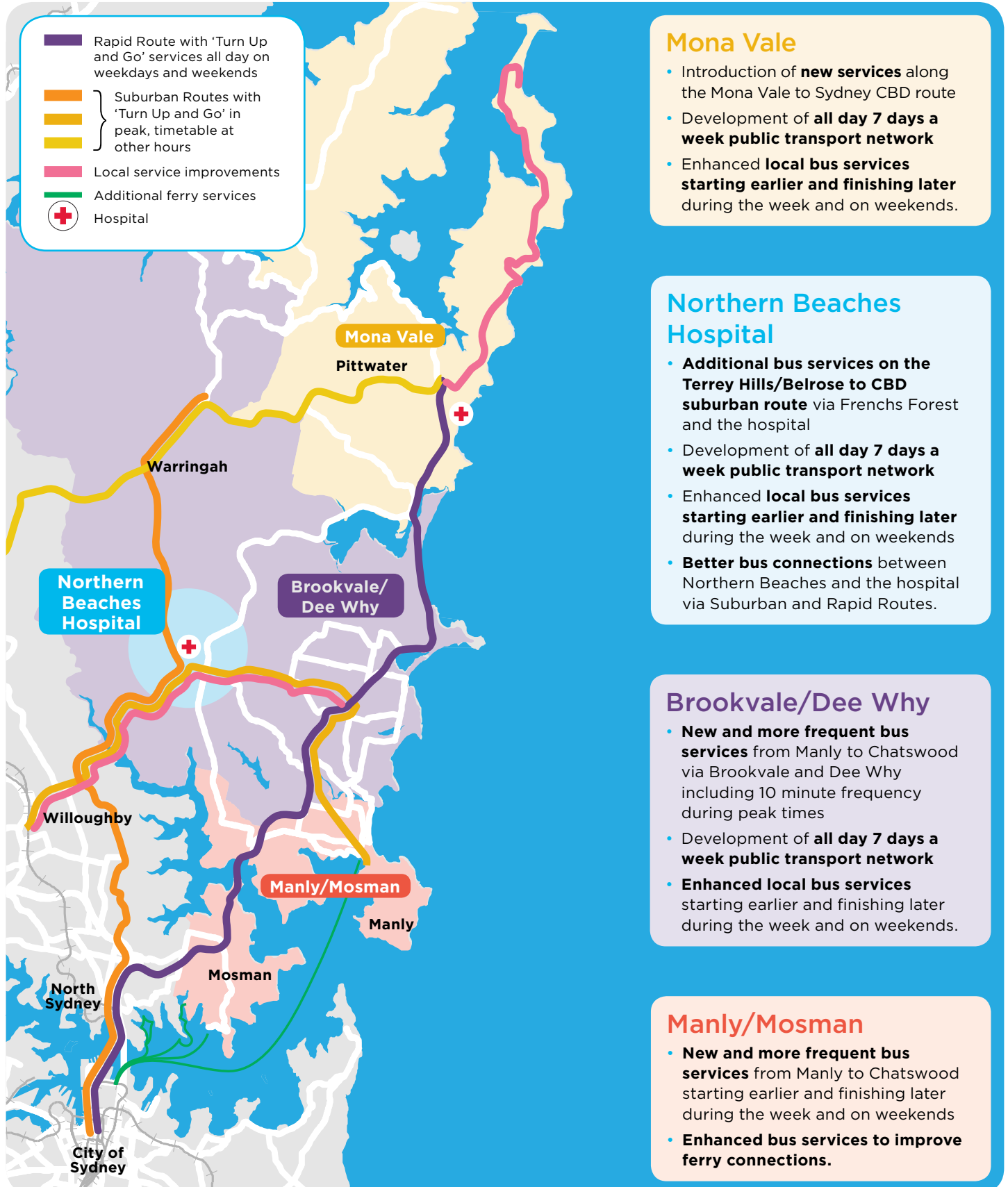
Improvements in the next 5 years – Infrastructure

Public transport and roads both play an important part in meeting future transport needs in the Northern Beaches – and this is reflected in our investment decisions that are integrated and balanced.



Improvements in the next 5 years – Services

To create a modern and customer-focused system we are integrating our transport services, introducing additional services and increasing the frequency of services for the Northern Beaches. We will continue to monitor the demand for bus and ferry services and add additional services as required, on both north-south and east-west corridors.



Planning now for the future

The *Northern Beaches Transport Action Plan* is a plan to transform transport in the Northern Beaches so that it can grow with the increasing number of people and jobs in the area. The Plan looks at both the immediate actions that we are delivering, but also sets out the longer term planning we will undertake to meet the needs of customers into the future.

A Northern Beaches motorway tunnel

We will evaluate the feasibility of constructing a new motorway tunnel linking the Northern Beaches peninsula to Sydney's motorway network from north of the Spit Bridge to the Warringah Freeway.

These planning and feasibility studies will evaluate a number of potential routes, including a southern route under Mosman as well as a northern route under Middle Harbour and Northbridge.

The studies will identify what are the best routes for a tunnel, where the connections to a tunnel should be established and what the benefits a motorway tunnel would provide to the community.

Continued improvements to bus services

Buses are a key part of the Northern Beaches growing and evolving transport network. We will progressively continue to improve local bus services and the BRT services and infrastructure so that they are able to adapt to changing customer needs, including being able to access both the Sydney CBD and other major centres.

We will plan for a Rapid bus route servicing Chatswood to Manly offering fast and reliable bus services between these major centres and improving the connection via the hospital for the community.

Continued improvements to roads

Planning is underway to improve safety on Mona Vale Road by upgrading to four lanes between Manor Road at Ingleside and Foley Street at Mona Vale. Work is underway to develop concept designs, carry out geotechnical investigations and environmental assessments.

Longer term road projects include planning for further upgrades for Mona Vale Road to four lanes and upgrades to minimise flooding of Wakehurst Parkway.

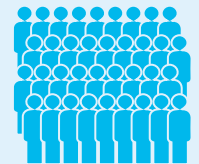
Expanded rail capacity

Planning is already underway for a second harbour rail crossing and new CBD Line. This is the vital next step following the delivery of the North West Rail Link to expand rapid transit and deliver the much needed capacity on Sydney's rail network. The planning also includes the investigation of a longer term rapid transit link from Neutral Bay to the second harbour crossing.

This investment will enable the Sydney network to carry an additional 100,000 people per hour in the peak, delivering sufficient capacity to serve the city centre well into the future.

For the Northern Beaches this means more people choosing to travel by rail, helping to reduce the number of buses travelling into the city centre from north of the Sydney Harbour. This also provides increased capacity for buses and cars travelling from the Northern Beaches to the Sydney CBD.

100,000 additional people per hour in the peak periods on the rail network.



Expanding ferry services to support growth

In the future, a new east to west cross harbour ferry route that provides additional travel destinations will be investigated. Inclusion of Manly as part of this cross harbour ferry route will be considered.

The Sydney Ferries fleet replacement program and the delivery of additional vessels in the future will allow for increased service frequency and reduced travel times between Manly and Circular Quay while providing improvements to reliability and travel comfort.

A deregulated service is currently servicing Darling Harbour from Manly and with the development of Barangaroo further planning to connect these services to the Northern Beaches will occur.

We will also plan for new and more frequent bus connections to ferry services as demand increases.

Planning now for the future

For further information: www.transport.nsw.gov.au



Mona Vale

- **Extend Northern Beaches BRT** to 24 hour operations from Mona Vale to the CBD and improve BRT infrastructure
- **New and more frequent bus services** from Mona Vale to Macquarie Park
- **Upgrade of Mona Vale Road** from Manor Road to Mona Vale and from McCarrs Creek Road to Powder Works Road
- **Targeted improved flood access** along Wakehurst Parkway.

Northern Beaches Hospital

- **Access to the Northern Beaches Hospital will be improved** with new and **more frequent bus services** to and from Manly and Chatswood via the Hospital
- The **new Northern Beaches Hospital public transport interchange** will serve as a hub for bus services between Manly and Chatswood.

Brookvale/Dee Why

- The Manly to Chatswood Suburban route via Brookvale, Dee Why and the Northern Beaches Hospital will **potentially be upgraded to a Rapid route**
- Local services across the network will be **more frequent and start earlier and finish later during the week and on weekends**
- **Improved interchange facilities** at Mona Vale and 3-5 minute service frequencies along the Mona Vale to Sydney CBD corridor.

Manly/Mosman

- **Deliver a second harbour rail crossing** and investigate a rapid transit link from Neutral Bay to the second harbour rail crossing.

Northern Beaches Motorway Tunnel

- We will **conduct planning and feasibility studies** for a motorway tunnel linking the Northern Beaches to the Warringah Freeway.