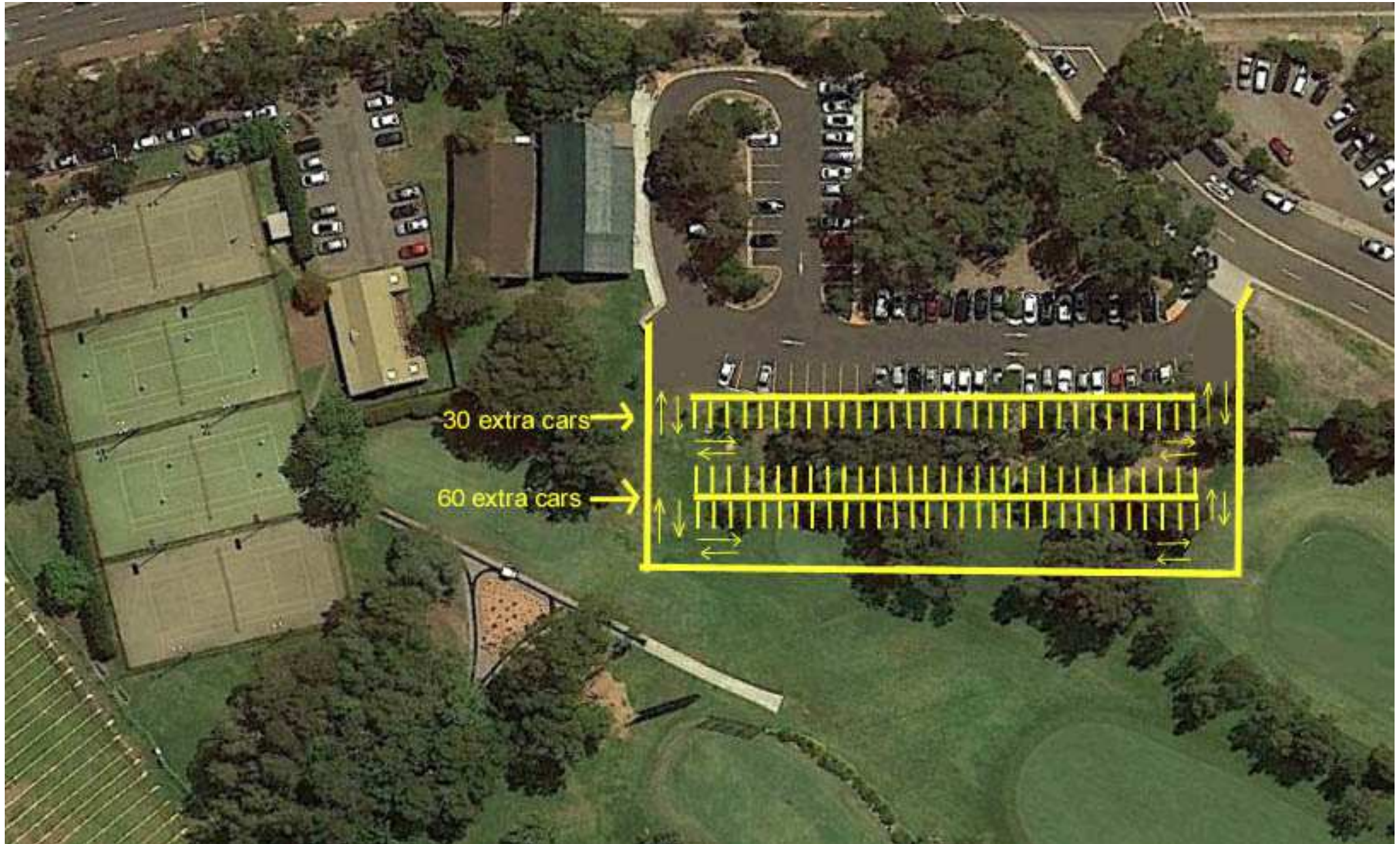


Option 1 – Leave 3 Community Buildings as they are, Girl Guide, Scout and Tennis Club and construct 90 extra spaces using a very small area of the Golf Course. This is 15 more than the 75 currently proposed. This will also result in less visual impact of additional parking when viewed from Barrenjoey Rd.
NO IMPACT on the Golf Course operations as shown in the sketch



Option 2 – Leave 3 Community Buildings, as they are, Girl Guide, Scout and Tennis Club and construct at least 290 extra spaces using a very small area of the Golf Course along Golf Ave. Formalise the existing right angle parking with bitumen and line marking to provide 90 spaces and a further 270 spaces as shown totalling provision for 360 spaces. This is 215 more than the 75 extra currently proposed.



Option 3 – Leave 3 Community Buildings, as they are, Girl Guide, Scout and Tennis Club and construct at least 388 extra spaces using a very small area of the Golf Course along Golf Ave and south of the existing Beeby Reserve Car Park. This is a revised combination of Options 1 and 2. The furthest space would be an easy 3 minute walk to the bus stop.

