

From: [REDACTED]
To: projects@transport.nsw.gov.au
Sent: Monday, July 04, 2016 3:34 PM
Subject: Option 3 for B-Line Parking Mona Vale

Attention Transport for NSW
Community Engagement Manager
Northern Beaches B-Line Program
Infrastructure and Services

Attached is a combination of previously submitted Option 1 and 2 for B-Line parking at Mona Vale currently being considered by Transport for NSW.

I'll call this option 3, image attached.

It will save the Guides Hall, Scout Hall and Tennis Club from demolition.

All current casual parking spots "Saved" for the community, NONE lost to commuter parking.

The result is 422 commuter spots instead of proposed 150.

Of course this can be scaled back to a reduced number if desired.

The tree line along Golf Ave is saved.

A few car bays can be made into a landscaped area with a tree or two to soften the car park.

From the furthest most eastern car spot closest to the Golf Clubhouse it would be a casual easy level 3 minute walk to the bus stop, this is completely acceptable.

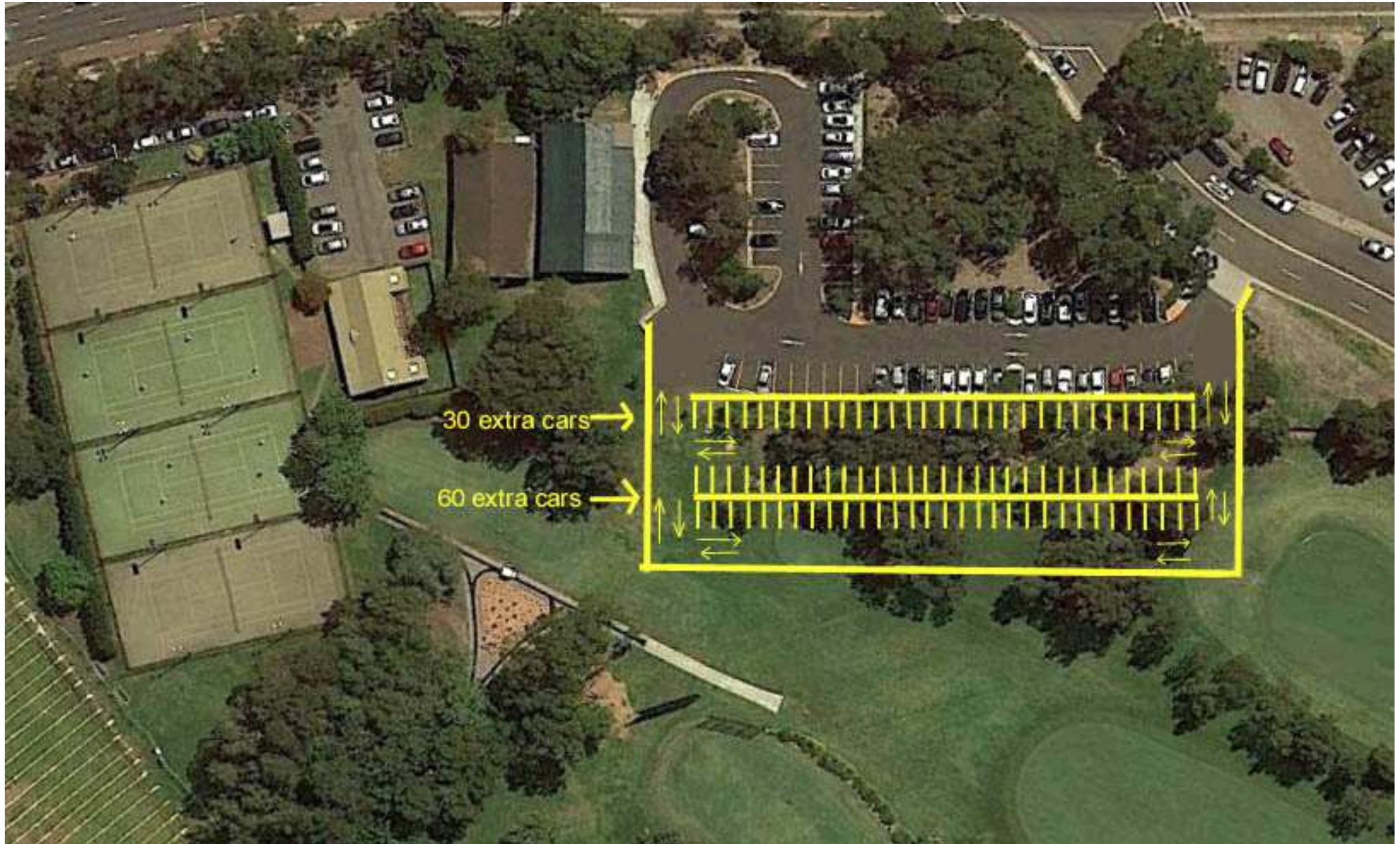
This is a "Win Win" from the meeting with TfNSW 27 June 2016.

I ask that Transport for NSW if not decided on Options 1 or 2 yet looks at this combined 3rd option with a definite sensible outcome of saving the Guides Hall, Scout Hall and Tennis Club from demolition.

Regards

[REDACTED]

Option 1 – Leave 3 Community Buildings as they are, Girl Guide, Scout and Tennis Club and construct 90 extra spaces using a very small area of the Golf Course. This is 15 more than the 75 currently proposed. This will also result in less visual impact of additional parking when viewed from Barrenjoey Rd.
NO IMPACT on the Golf Course operations as shown in the sketch



Option 2 – Leave 3 Community Buildings, as they are, Girl Guide, Scout and Tennis Club and construct at least 290 extra spaces using a very small area of the Golf Course along Golf Ave. Formalise the existing right angle parking with bitumen and line marking to provide 90 spaces and a further 270 spaces as shown totalling provision for 360 spaces. This is 215 more than the 75 extra currently proposed.



Option 3 – Leave 3 Community Buildings, as they are, Girl Guide, Scout and Tennis Club and construct at least 388 extra spaces using a very small area of the Golf Course along Golf Ave and south of the existing Beeby Reserve Car Park. This is a revised combination of Options 1 and 2. The furthest space would be an easy 3 minute walk to the bus stop.

